



Los Angeles County COVID-19 Community Testing Dashboard

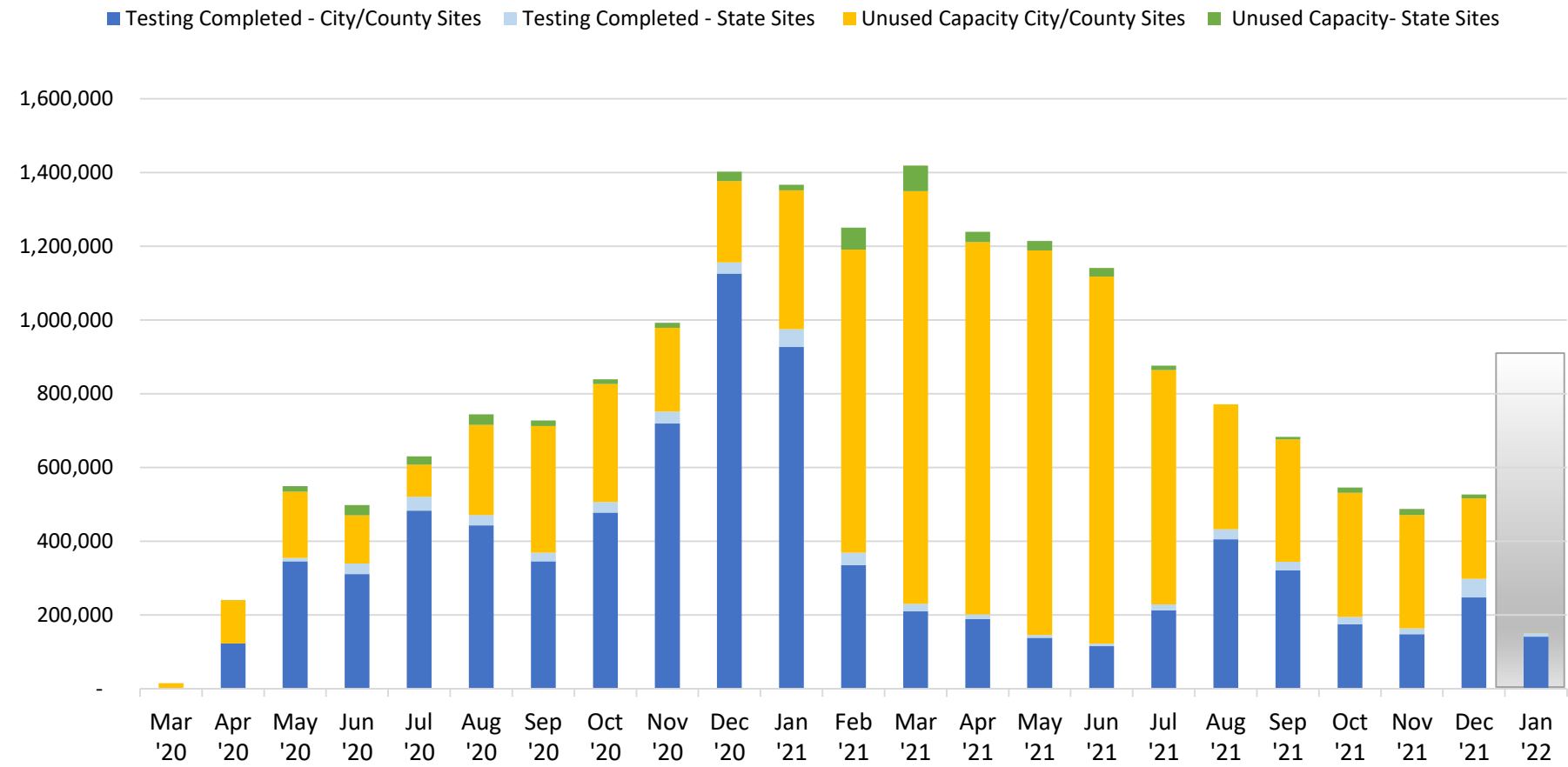
**Last Updated:
January 13, 2022**

This dashboard summarizes COVID-19 Diagnostic Testing using the Polymerase Chain Reaction (PCR) Molecular test for SARS-CoV-2 at Community Testing Sites in Los Angeles County. This dashboard will be updated weekly. Data presented on testing completed at County- and City-operated Community Testing Sites only reflects a portion of the testing happening across LA County. Additional information on Countywide COVID-19 testing can be found on the [Los Angeles County Department of Public Health Dashboard](#), [Long Beach Public Health Dashboard](#), and the [Pasadena Public Health Dashboard](#).



Testing Volume/Utilization

Monthly COVID-19 Testing Capacity and Utilization at Community Testing Sites¹

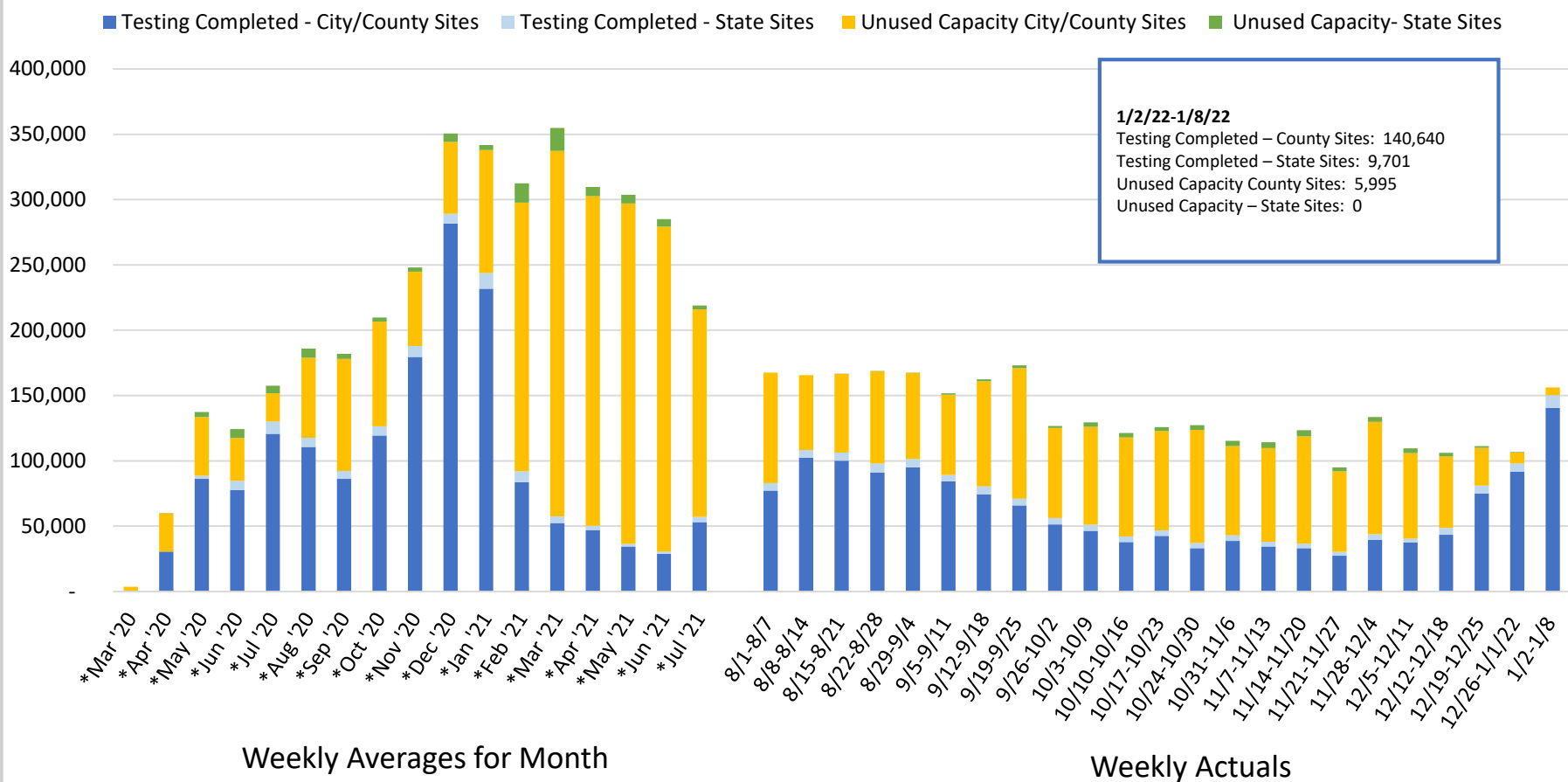


1. The graph reflects monthly testing volume and capacity at fixed/pop-up City, County, and State-supported COVID-19 community testing sites. Additional testing volume for over 100 additional testing sites, including CVS, and FQHCs are not reflected. Unused capacity includes no shows and unscheduled appointments. The gray box corresponds to incomplete data. City closed all community testing sites on 12/4/21.



Testing Volume/Utilization

Weekly COVID-19 Testing Capacity and Utilization at Community Testing Sites¹

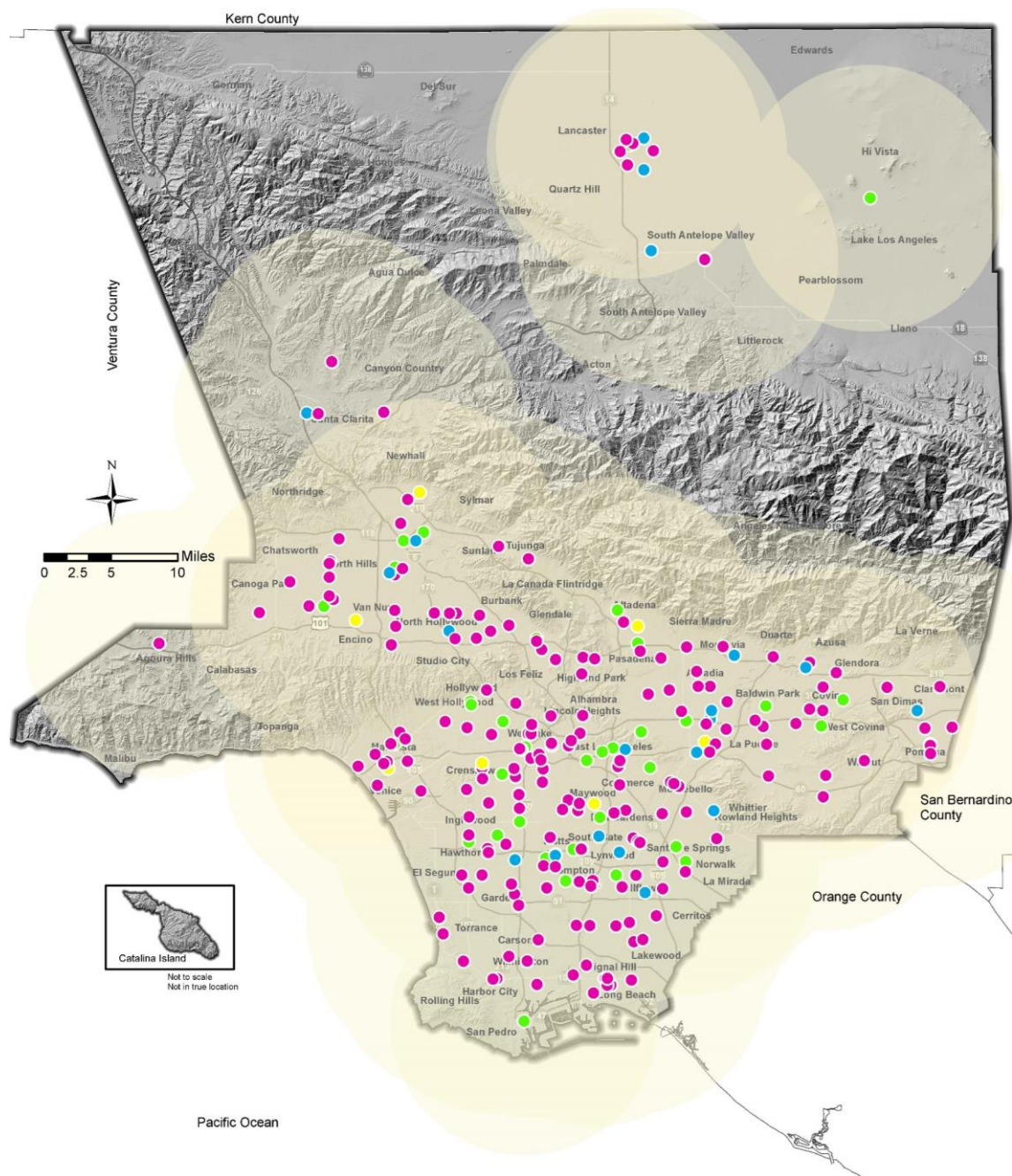


1. The graph reflects weekly testing volume and capacity at fixed/pop-up City, County, and State-supported COVID-19 community testing sites. Additional testing volume for over 100 additional testing sites, including CVS, and FQHCs are not reflected. Unused capacity includes no shows and unscheduled appointments. Asterisk (*) = Weekly averages for the month. The drop in testing volume/capacity during the week of 11/21-11/27 was related to holiday closures. City closed all community testing sites on 12/4/21.

LA County COVID-19 Testing Sites¹

Legend

- County(21)
- State(7)
- Additional Testing Sites(189)
- Pop Up Testing Sites(36)
- 10-mile radius around each site
- Freeway
- Highway



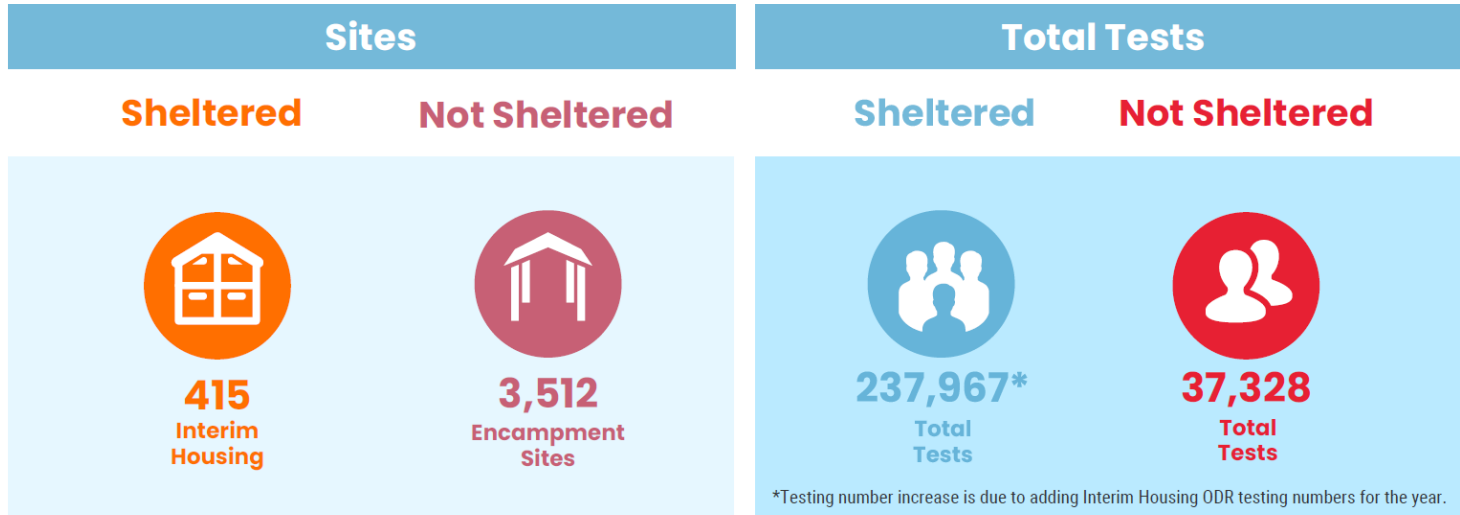
1. The map reflects all community testing sites as of 1/8/22. 10-mile radius is used as a proxy for the State’s expectation that at least 75% of a region’s population has a testing site within 30 minutes drive in urban areas and 60 minutes drive in rural areas.

Source: Department of Health Services

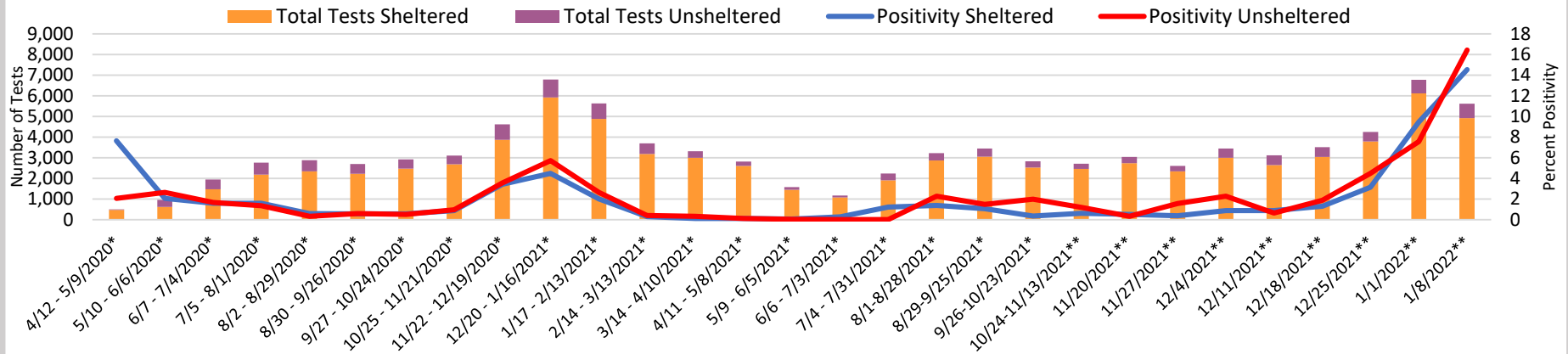


LA County COVID-19 Testing for Persons Experiencing Homelessness (PEH)

COVID Testing in Sheltered and Unsheltered Settings as of 1/8/22



Weekly Percent Positive



*Calculations are averages of the start and end date **Actual weekly counts

Interim Housing: Includes Shelters, Bridge Housing, Recuperative Housing, Project Room Key, Quarantine/Isolation sites, etc.

Total Tests: A cumulative count based on weekly testing. Sheltered testing data from week 4/12/20 and Not Sheltered data from week 5/3/20.

Description of Terminology: Sheltered – Tests completed for individuals in Interim Housing (IH), Isolation/Quarantine Site (IQ), or Project Room Key (PRK). Unsheltered – Tests completed for individuals through street and encampment outreach.

Source: The Department of Health Services - Housing For Health HFH PEH COVID-19 Testing WestPac Lab counts