



Los Angeles County COVID-19 Community Testing Dashboard

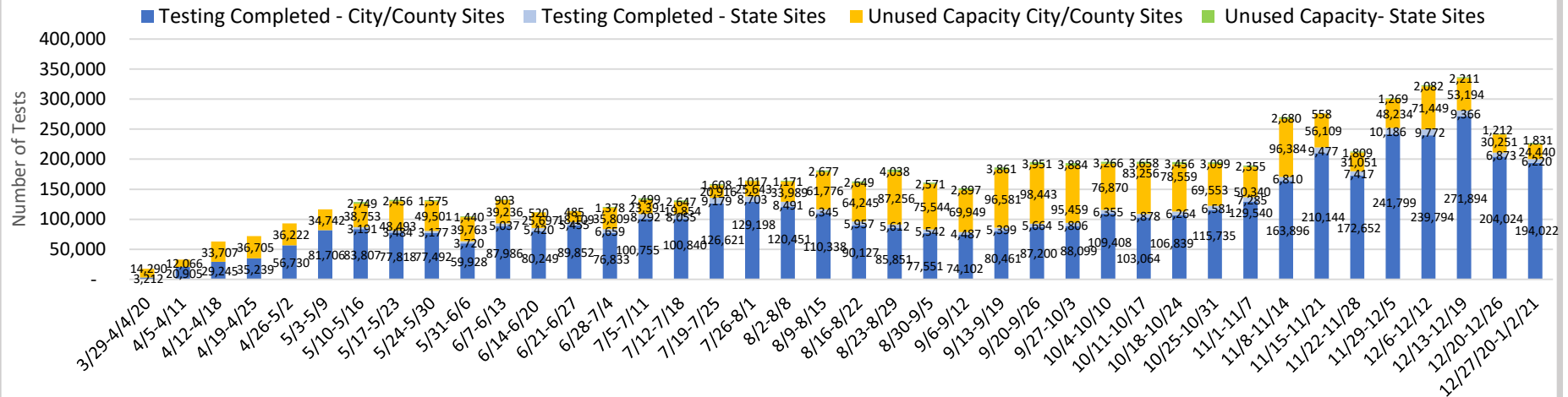
***Last Updated:
January 7, 2021***

This dashboard summarizes COVID-19 Diagnostic Testing using the Polymerase Chain Reaction (PCR) Molecular test for SARS-CoV-2 at Community Testing Sites in Los Angeles County. This dashboard will be updated weekly. Data presented on testing completed at County- and City-operated Community Testing Sites only reflects a portion of the testing happening across LA County. Additional information on Countywide COVID-19 testing can be found on the [Los Angeles County Department of Public Health Dashboard](#), [Long Beach Public Health Dashboard](#), and the [Pasadena Public Health Dashboard](#).

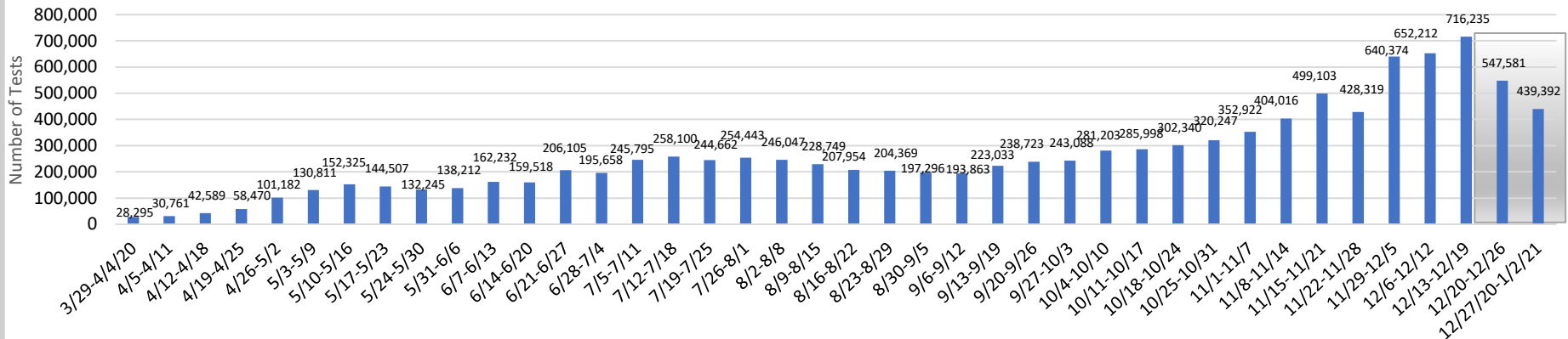


Testing Volume/Utilization

Weekly COVID-19 Testing Capacity and Utilization at Community Testing Sites¹



Weekly COVID-19 Testing Done in All Settings in LA County (by Specimen Collection Date)²

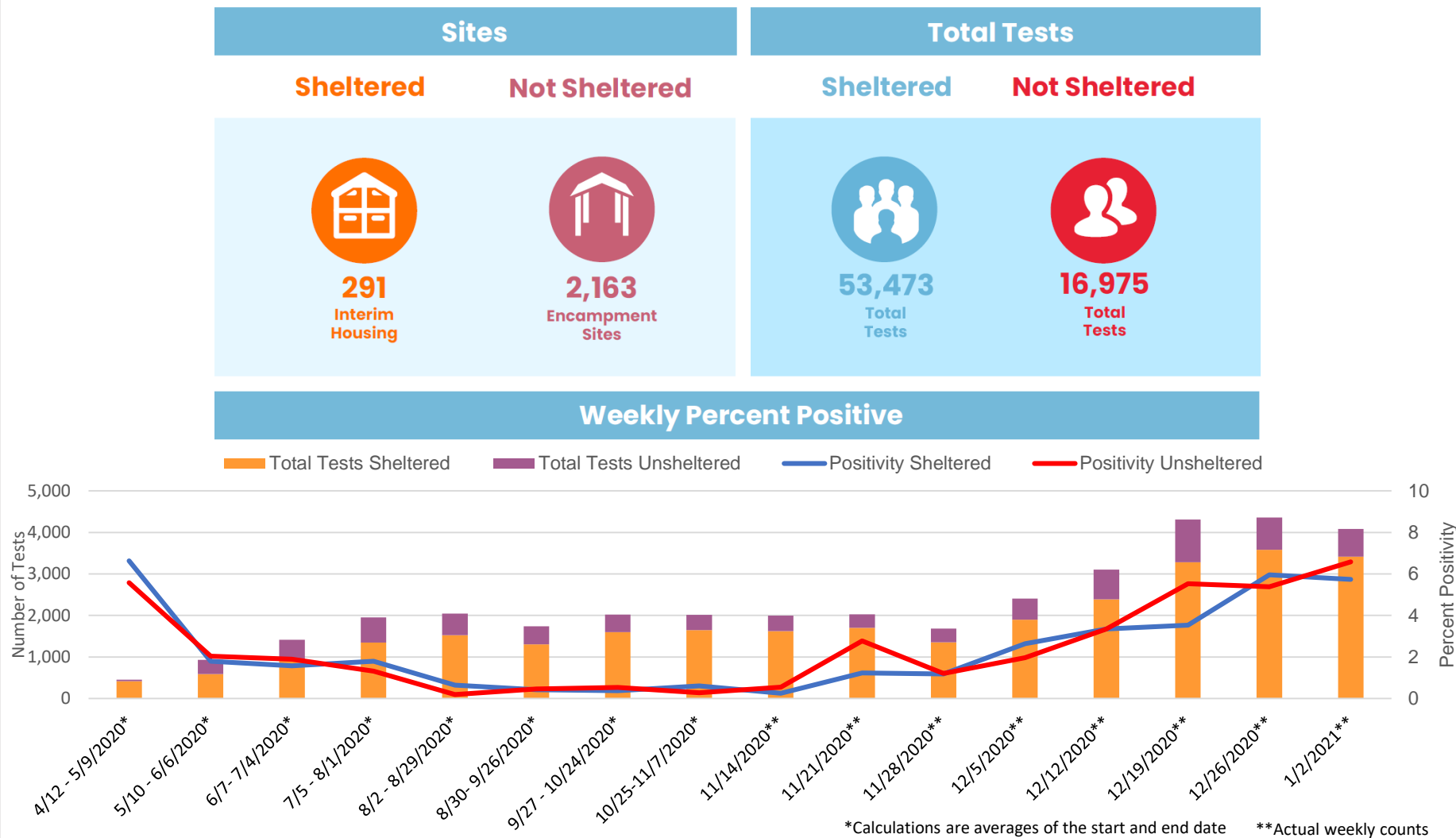


1. The graph reflects testing volume and capacity at fixed City and County-operated COVID-19 community testing sites and the State Optum Serve and Verily sites. Additional testing volume for over 100 Additional Testing sites, including CVS, and FQHCs are not reflected. Unused capacity includes no shows and unscheduled appointments. The drop in testing volume during the weeks of 11/22, 12/20 and 12/27 were due to holiday closures.
2. Data includes testing done in all settings including: hospitals, clinics, skilled nursing facilities, homeless shelters, etc., in addition to community testing done in drive thru and walk-in sites. Data does not include the Cities of Long Beach and Pasadena. The gray box corresponds to dates that are likely to not yet be reported completely. There will be reporting delays associated with the holidays. **Electronic Lab Reporting Data only.** Not all laboratories submit electronic reports, positive persons will not equal cases.



LA County COVID-19 Testing for Persons Experiencing Homelessness (PEH)

COVID Testing in Sheltered and Unsheltered Settings as of 1/2/21



Interim Housing: Includes Shelters, Bridge Housing, Recuperative Housing, Project Room Key, Quarantine/Isolation sites, etc.

Total Tests: A cumulative count based on weekly testing. Sheltered testing data from week 4/12/20 and Not Sheltered data from week 5/3/20.

Description of Terminology: Sheltered – Tests completed for individuals in Interim Housing (IH), Isolation/Quarantine Site (IQ), or Project Room Key (PRK). Unsheltered – Tests completed for individuals through street and encampment outreach.

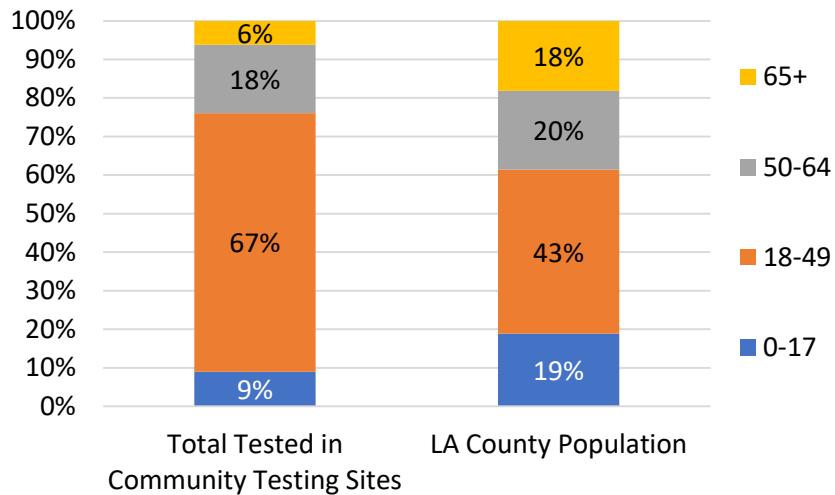
Source: The Department of Health Services - Housing For Health HFH PEH COVID-19 Testing WestPac Lab counts



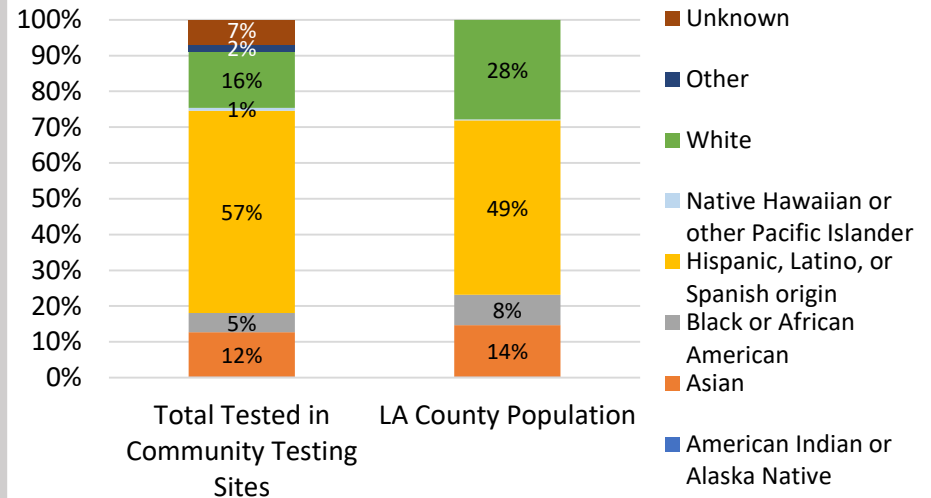
Community (PCR) Testing Demographics¹

(LA County N = 10,278,834; Total Tests with SOGI Information for tests completed at Community Testing Sites N = 1,870,923)

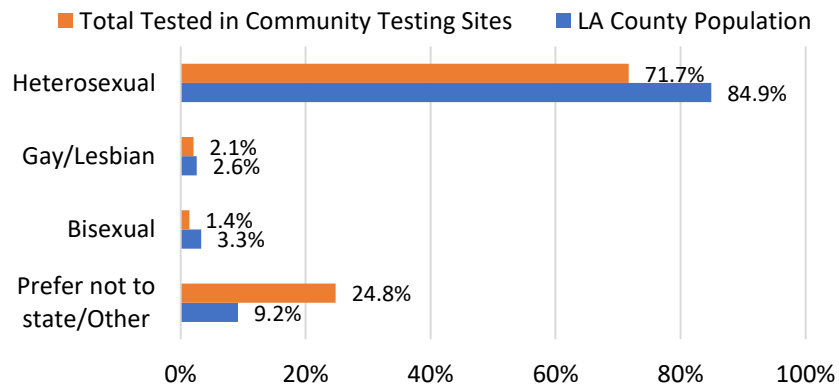
Total COVID-19 Tests Completed by Age Group



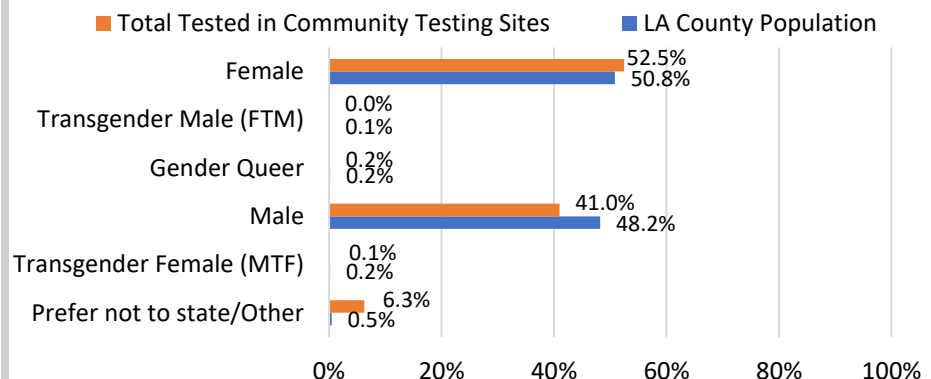
Total COVID-19 Tests Completed by Race/Ethnicity



Total COVID-19 Tests Completed by Sexual Orientation²

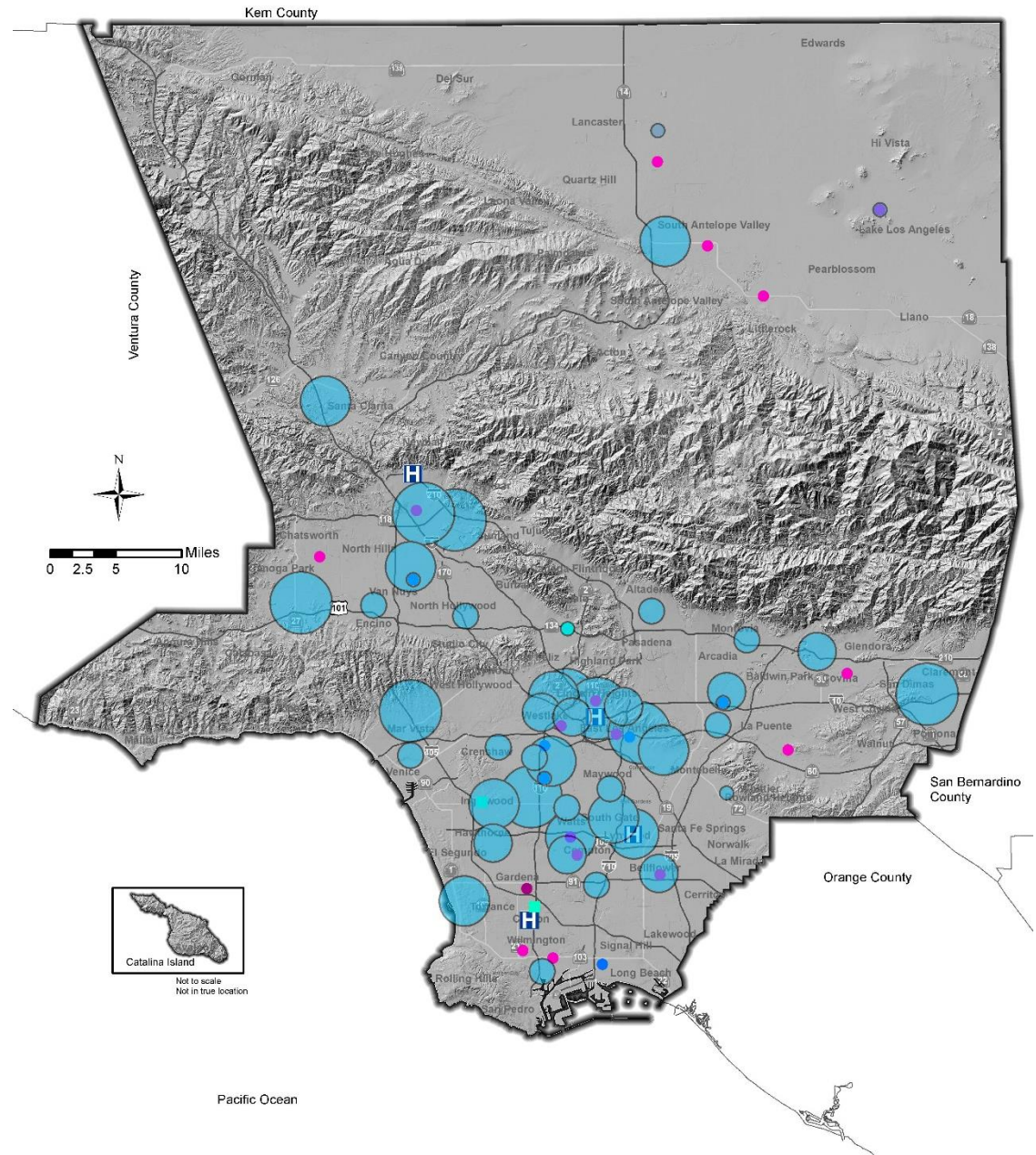
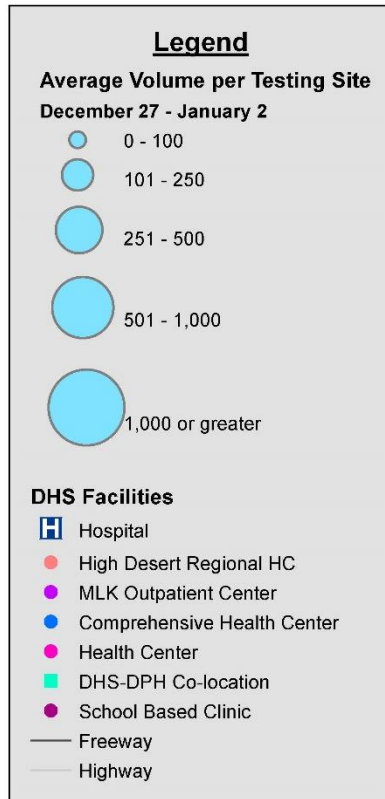


Total COVID-19 Tests Completed by Gender Identity³



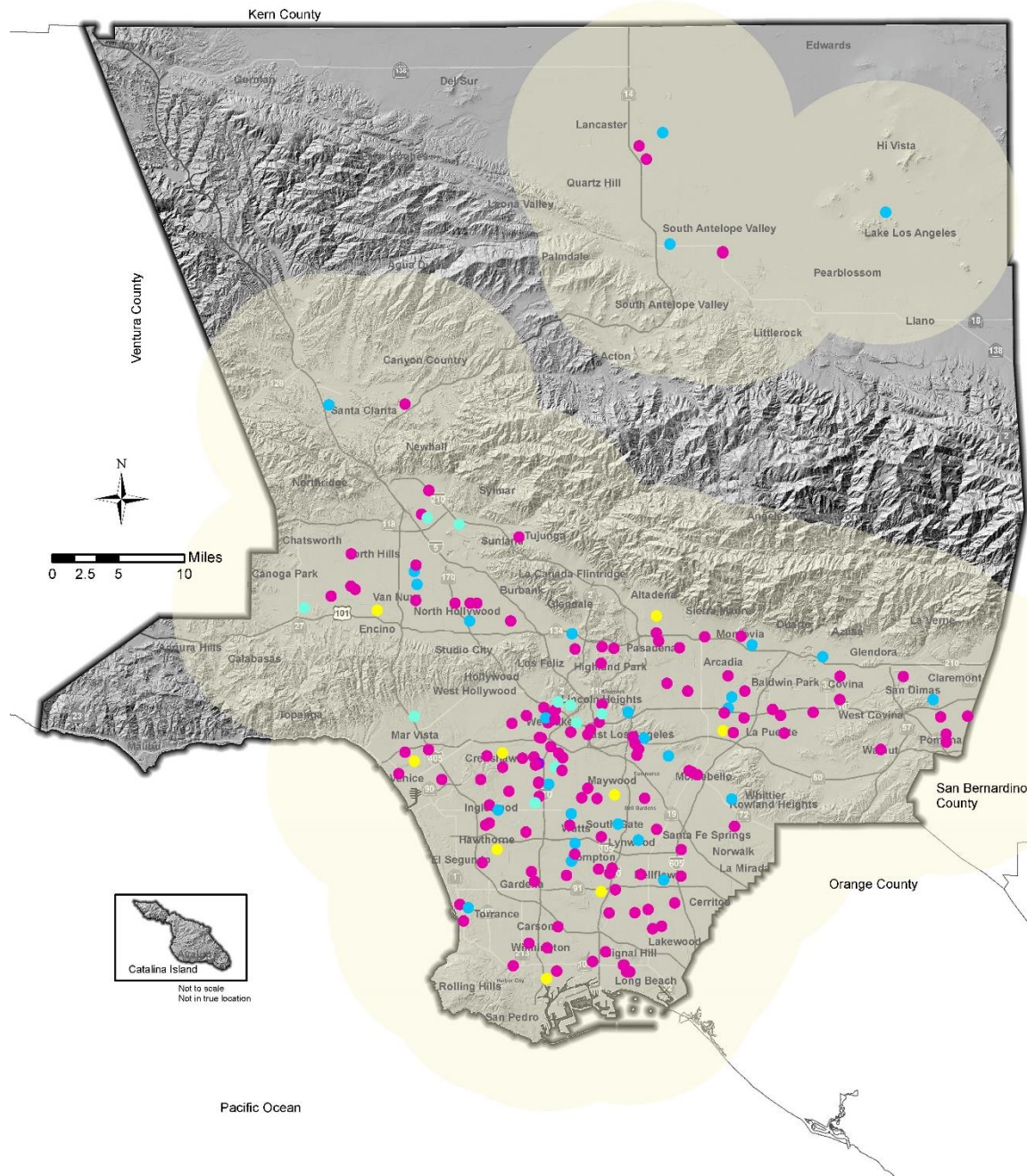
1. Tests completed at the fixed City and County-operated community COVID-19 testing sites between March 30, 2020 – January 2, 2021. City data was only available through June 27, 2020. Does not include tests completed at State testing sites or Additional Testing sites (e.g., CVS, Community Clinics, etc). We will add data from other testing sites as data becomes available.
2. Community testing site percentages are based on the 91% responses received.
3. Community testing site Percentages are based on the 91% responses received.

Average Volume of Community (PCR) Testing, Past 7 Days¹



1. Average testing volume at the City and County-operated LA County community COVID-19 testing sites and State Optum Serve and Verily sites in the past 7 days. Testing sites are current as of 1/2/21.

LA County COVID-19 Testing Sites



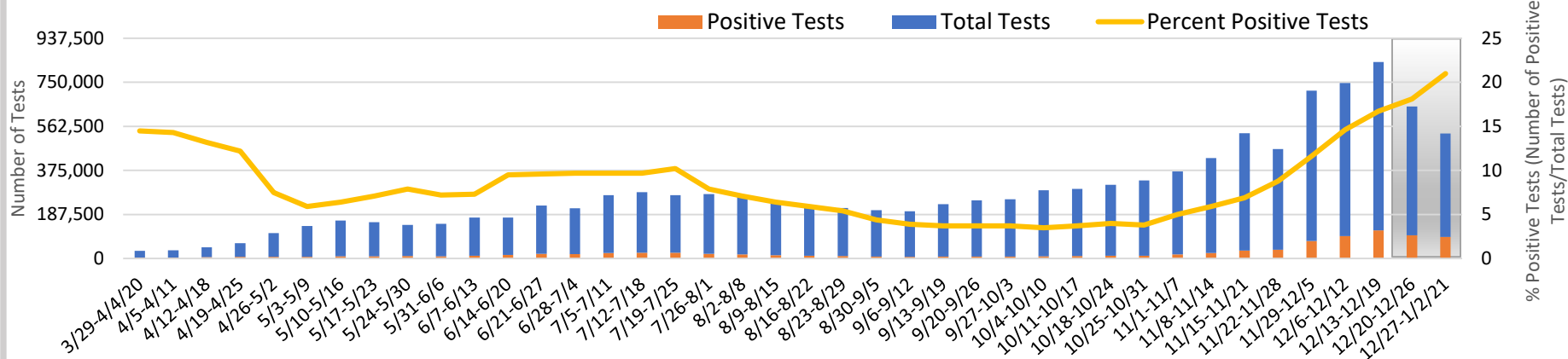
1. Testing Sites are current as of 1/2/21. 10-mile radius is used as a proxy for the State's expectation that at least 75% of a region's population has a testing site within 30 minutes drive in urban areas and 60 minutes drive in rural areas.

Source: Department of Health Services

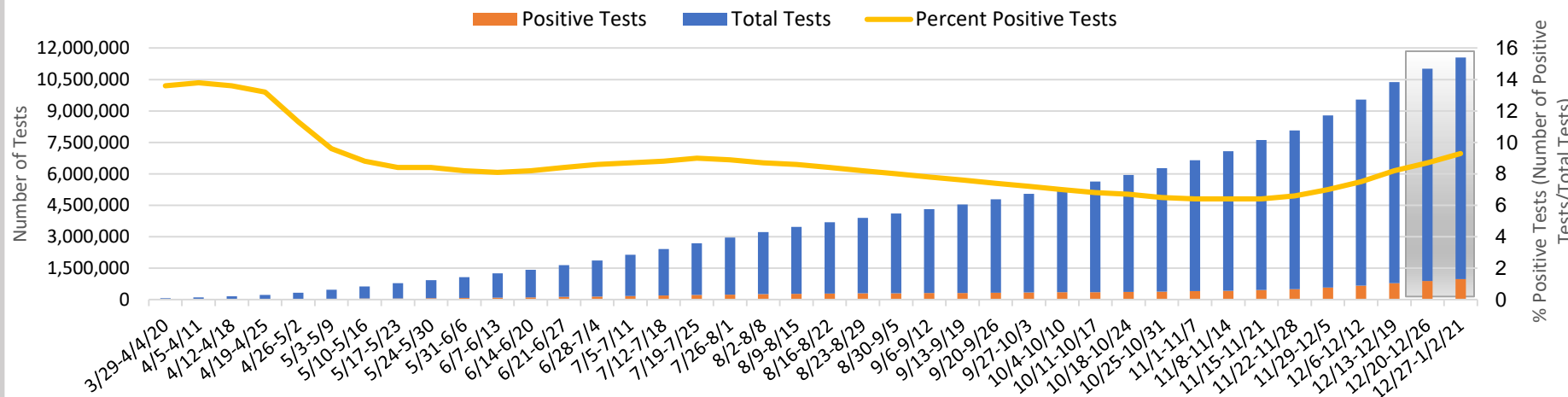


Positive Test Rate (All Sources)¹

Weekly COVID-19 Testing and Percent Positive Test Rate



Weekly Cumulative Number of Tests and Percent Positive Test Rate in LA County (by Specimen Collection Date)

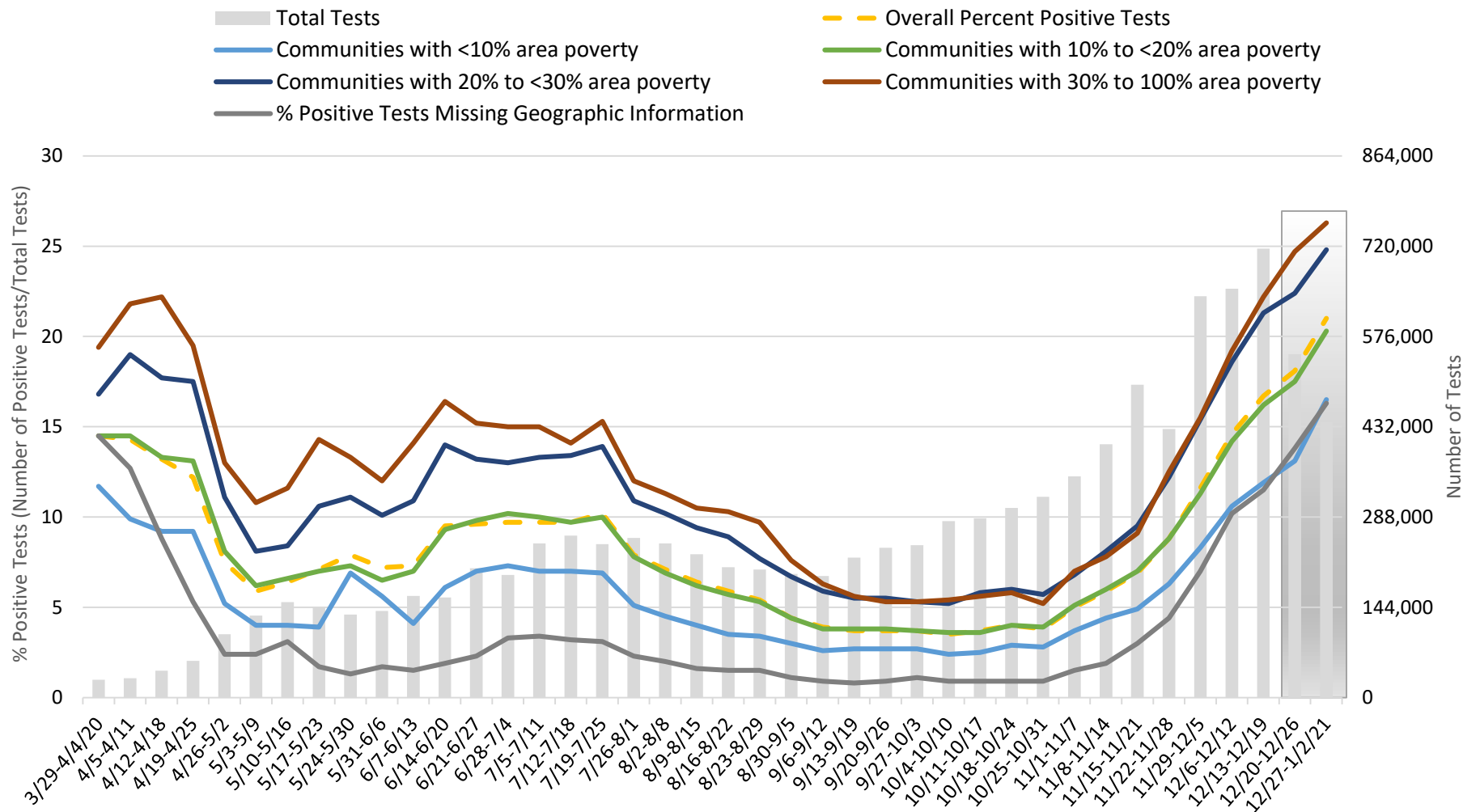


1. Data includes testing done in all settings including: hospitals, clinics, skilled nursing facilities, homeless shelters, etc., in addition to community testing done in drive thru and walk-in sites. Data does not include the Cities of Long Beach and Pasadena. The gray box corresponds to dates that are likely to not yet be reported completely. There will be reporting delays associated with the holidays. **Electronic Lab Reporting Data only.** Not all laboratories submit electronic reports, positive persons will not equal cases.



Positive Test Rate by Area Poverty

Weekly City and Community COVID-19 Percent Positive Tests by City/Community Area Poverty ¹



1. 9% of tests (n=968,636) had missing or unknown geographic information. The gray box corresponds to dates that are likely to not yet be reported completely. There will be reporting delays associated with the holidays.