



Los Angeles County COVID-19 Community Testing Dashboard

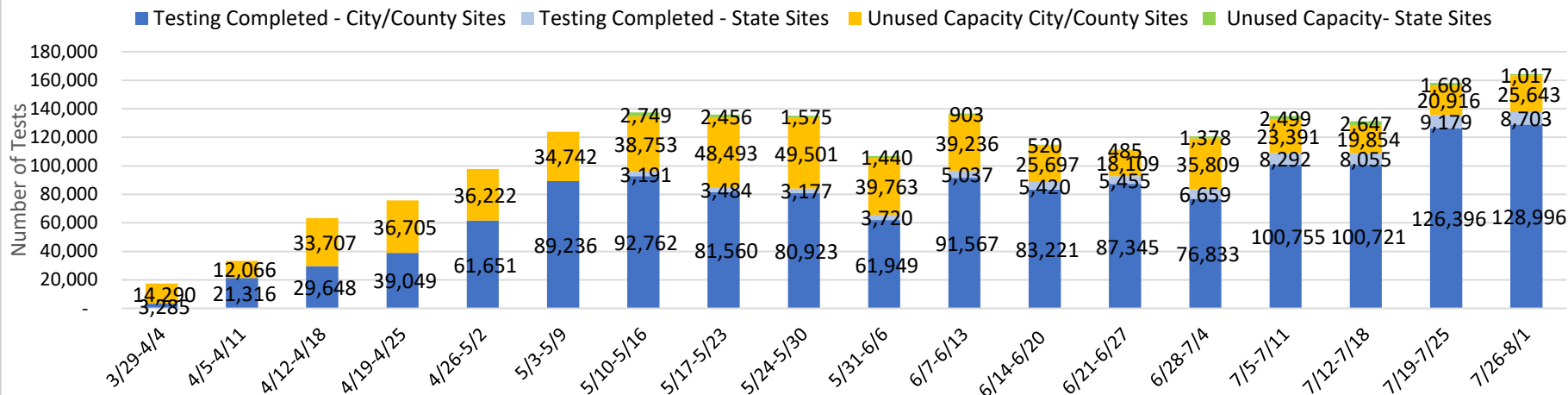
***Last Updated:
August 5, 2020***

This dashboard summarizes COVID-19 Diagnostic Testing using the Polymerase Chain Reaction (PCR) Molecular test for SARS-CoV-2 at Community Testing Sites in Los Angeles County. This dashboard will be updated weekly. Data presented on testing completed at County- and City-operated Community Testing Sites only reflects a portion of the testing happening across LA County. Additional information on Countywide COVID-19 testing can be found on the [Los Angeles County Department of Public Health Dashboard](#), [Long Beach Public Health Dashboard](#), and the [Pasadena Public Health Dashboard](#).

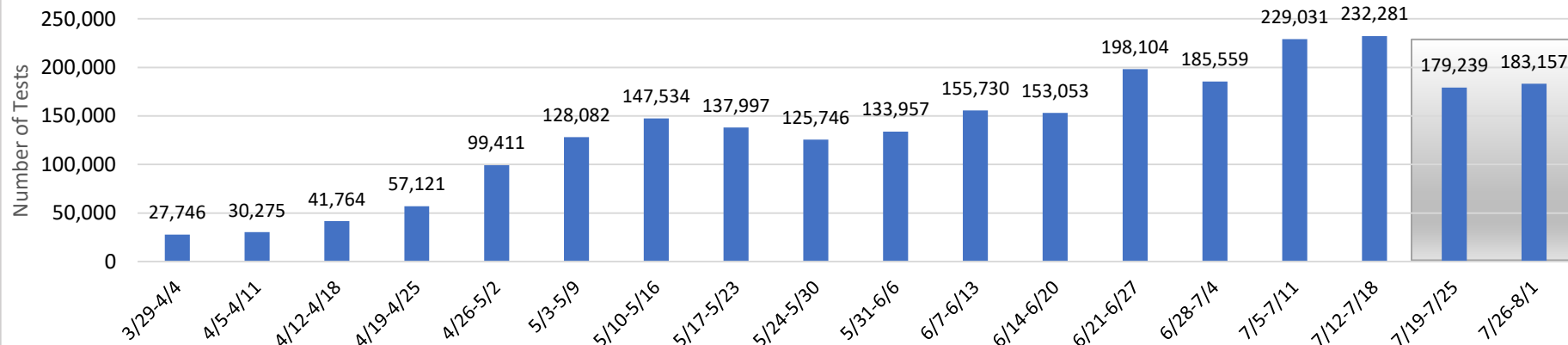


Testing Volume/Utilization

Weekly COVID-19 Testing Capacity and Utilization at Community Testing Sites¹



Weekly COVID-19 Testing Done in All Settings in LA County (by Specimen Collection Date)²



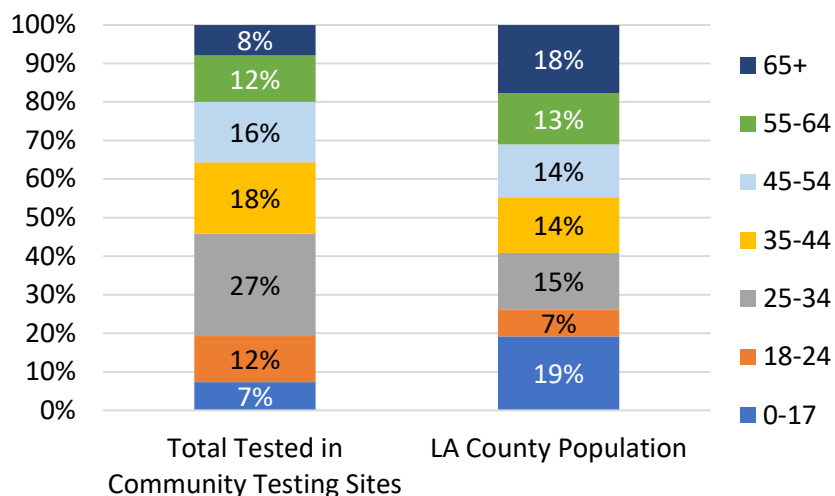
1. The graph reflects testing volume and capacity at City and County-operated COVID-19 community testing sites and the State Optum Serve and Verily sites. Additional testing volume for Over 50 Additional Testing sites, including CVS, and FQHCs are not reflected. Additional testing volume from these other testing sites will be added as data becomes available. Unused capacity includes no shows and unscheduled appointments.
 2. Due to lab reporting issues, the test numbers will be under counted. Data includes testing done in all settings including: hospitals, clinics, skilled nursing facilities, homeless shelters, etc., in addition to community testing done in drive thru and walk-in sites. Data does not include the Cities of Long Beach and Pasadena. The gray box corresponds to dates that are likely to not yet be reported completely. **Electronic Lab Reporting Data only.** Not all laboratories submit electronic reports, positive persons will not equal cases.
- Source: Fulgent; City of LA; State of California; Los Angeles County Department of Public Health – CMR17 Electronic Lab Reporting Data



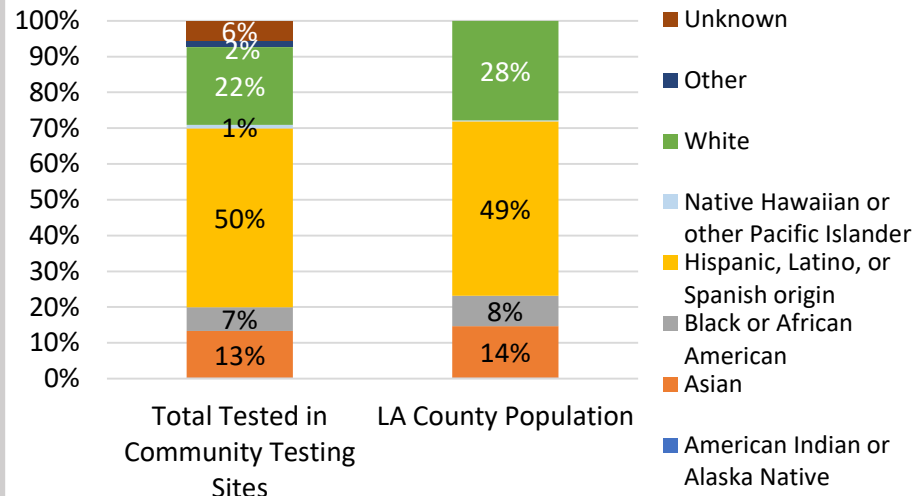
Community (PCR) Testing Demographics¹

(LA County N = 10,278,834; Total Tests Completed at Community Testing Sites N = 839,544)

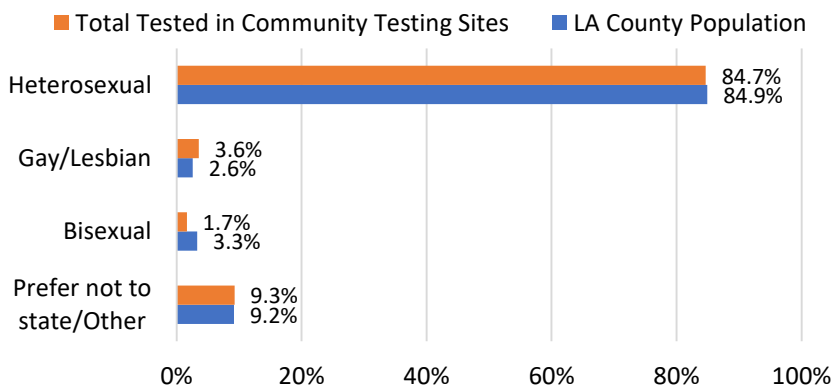
Total COVID-19 Tests Completed by Age Group



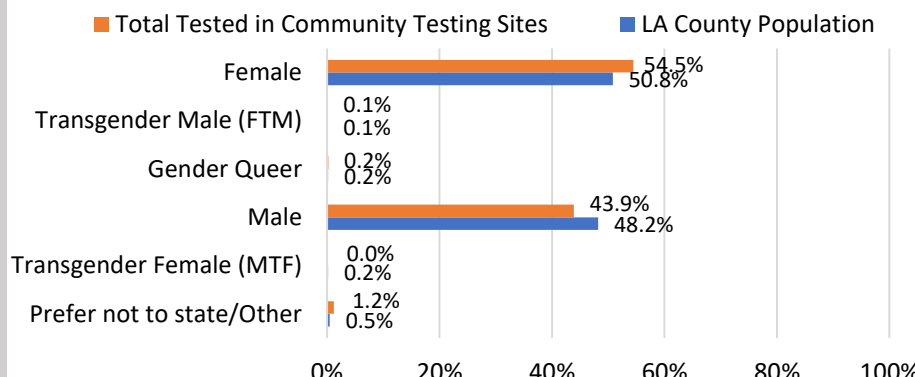
Total COVID-19 Tests Completed by Race/Ethnicity



Total COVID-19 Tests Completed by Sexual Orientation²



Total COVID-19 Tests Completed by Gender Identity³



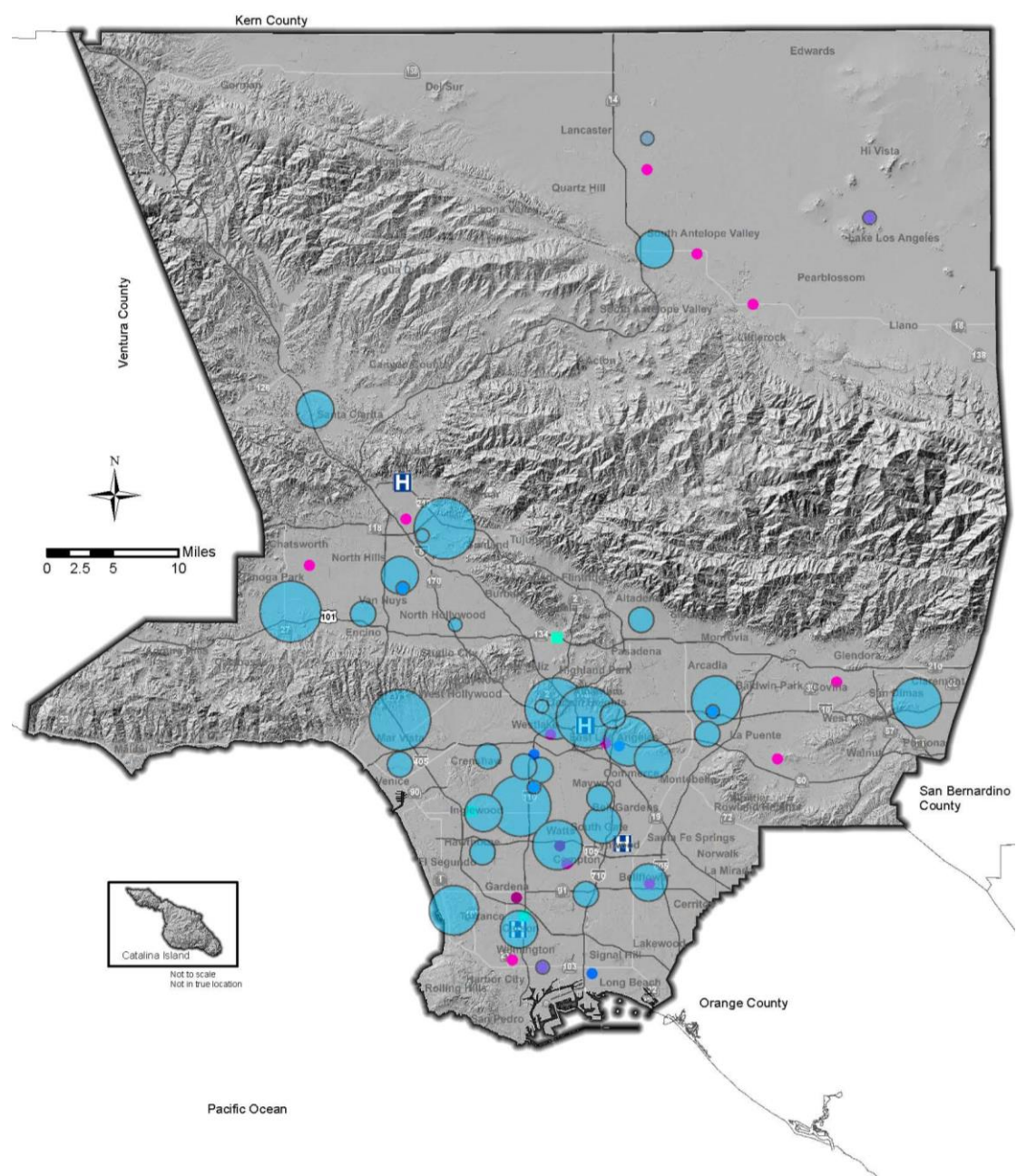
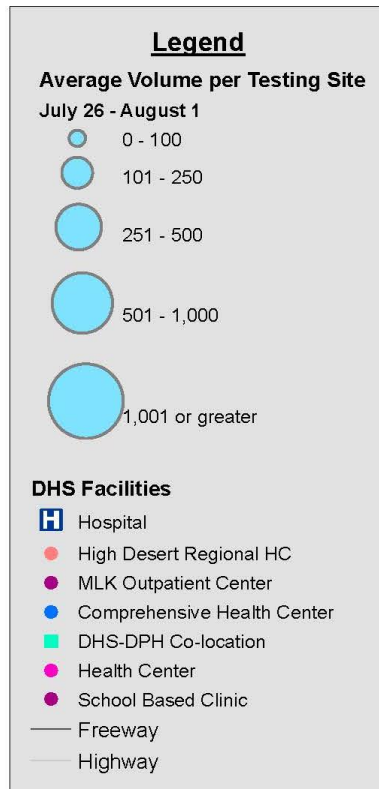
1. Data for these measures are not currently available due to a change in our registration system. Data in these tables are unchanged from last week's dashboard and will be updated in the coming weeks. Graphs show tests completed at the City and County-operated LA County community COVID-19 testing sites between March 30 – July 11, 2020. City data was only available through June 27th. Moving forward, the City data will not be included in the demographic numbers. Does not include tests completed at State testing sites, as well as the over 50 Additional Testing sites, including CVS, DHS Clinics, and FQHCs are not reflected. Additional testing volume from these other testing sites will be added as data becomes available.

2. Community testing site percentages are based on the 48% responses received.

3. Community testing site Percentages are based on the 47% responses received.

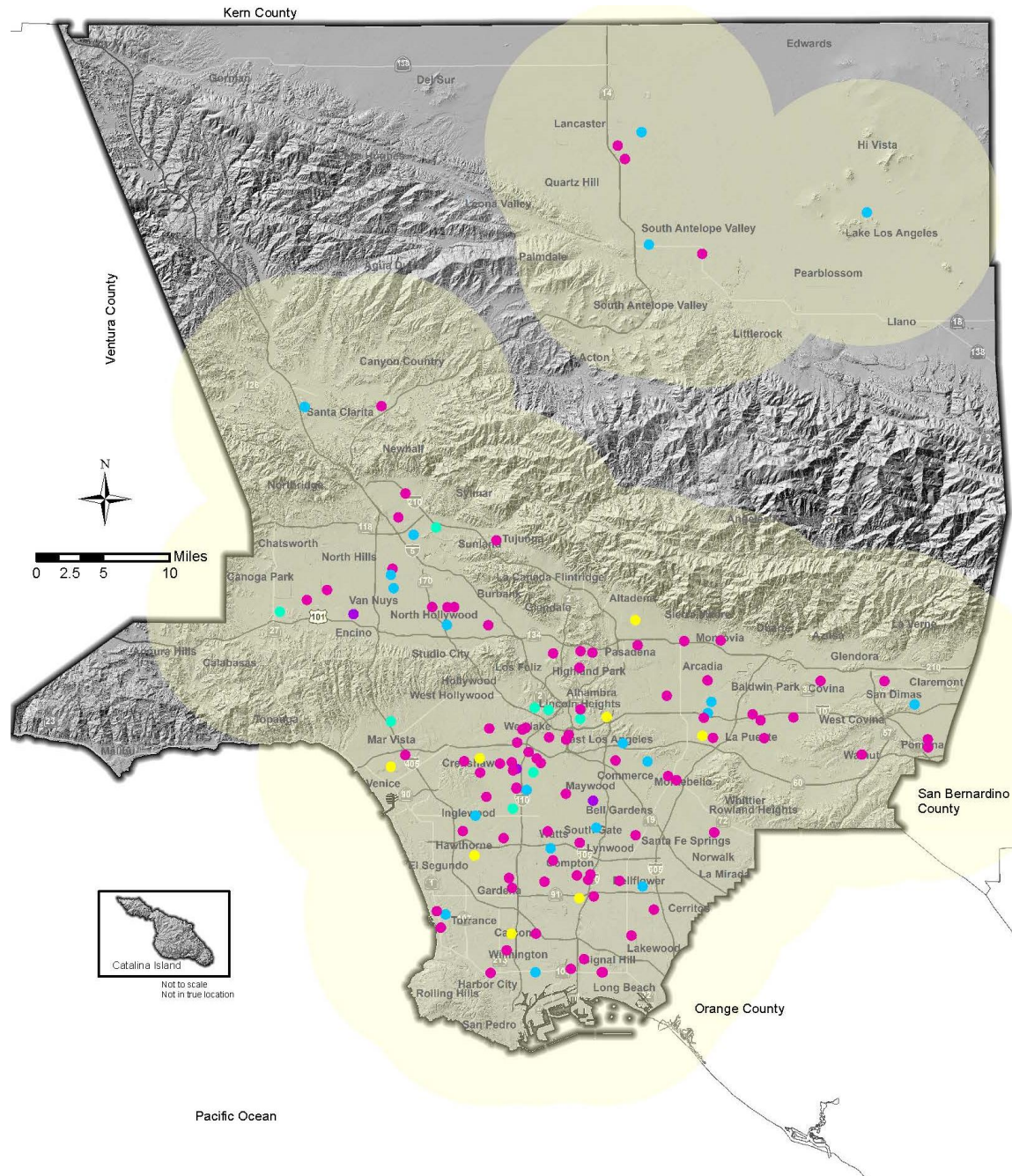
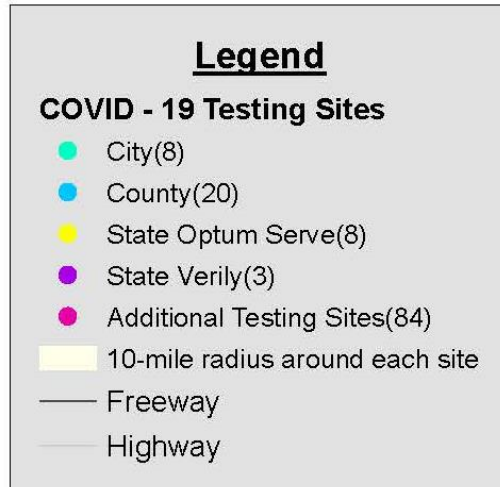
Source: Service Now;PEPS

Average Volume of Community (PCR) Testing, Past 7 Days¹



1. Average testing volume at the City and County-operated LA County community COVID-19 testing sites and State Optum Serve and Verily sites in the past 7 days. Testing sites are current as of 8/1/20.

LA County COVID-19 Testing Sites



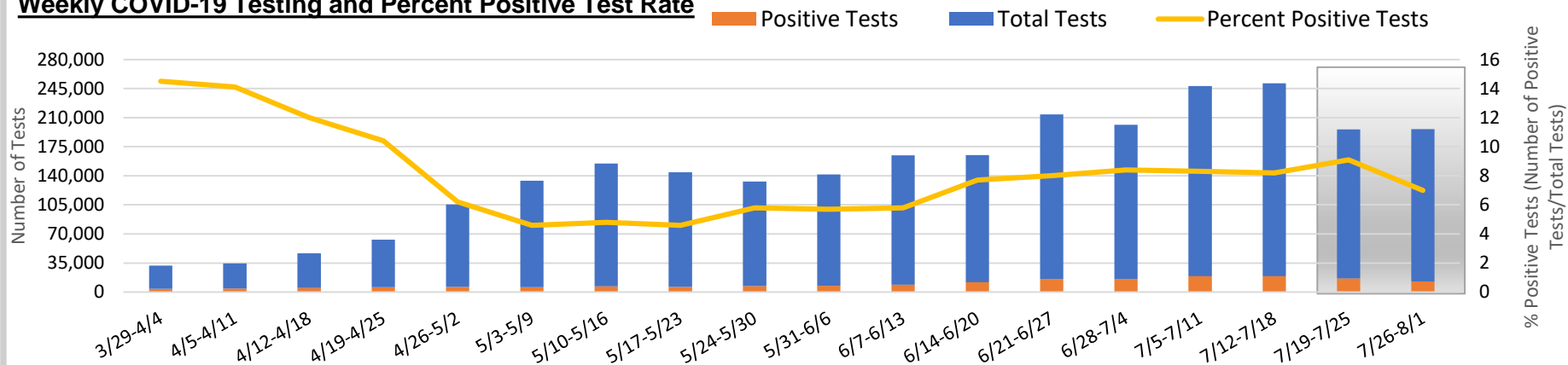
1. Testing Sites are current as of 8/1/20. 10-mile radius is used as a proxy for the State's expectation that at least 75% of a region's population has a testing site within 30 minutes drive in urban areas and 60 minutes drive in rural areas.

Source: Department of Health Services

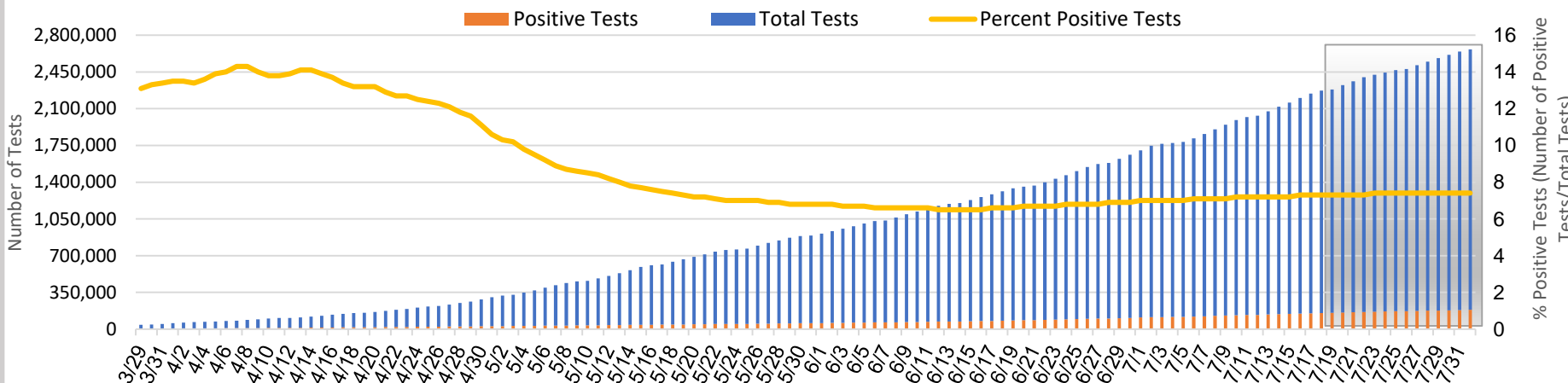


Positive Test Rate (All Sources)¹

Weekly COVID-19 Testing and Percent Positive Test Rate



Cumulative Number of Tests and Percent Positive Test Rate in LA County (by Specimen Collection Date)

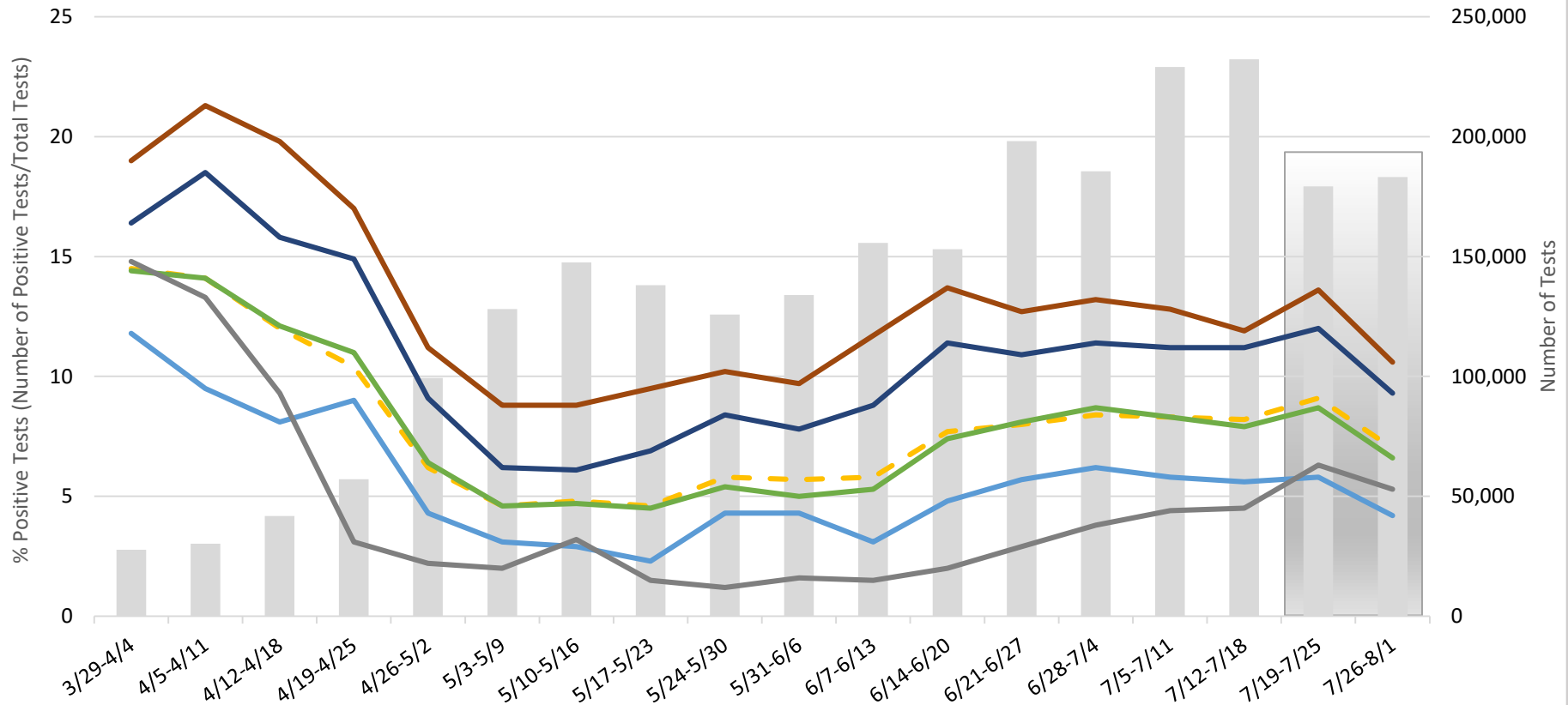


1. Due to lab reporting issues, the test numbers will be under counted. Data includes testing done in all settings including: hospitals, clinics, skilled nursing facilities, homeless shelters, etc., in addition to community testing done in drive thru and walk-in sites. Data does not include the Cities of Long Beach and Pasadena. The gray box corresponds to dates that are likely to not yet be reported completely. **Electronic Lab Reporting Data only.** Not all laboratories submit electronic reports, positive persons will not equal cases.



Positive Test Rate by Area of Poverty

Weekly City and Community COVID-19 Percent Positive Tests by City/Community Area of Poverty ¹



1. Due to lab reporting issues, the test numbers will be under counted. 13% of tests (n=304,946) had missing or unknown geographic information. The gray box corresponds to dates that are likely to not yet be reported completely.